

**DATASHEET for EnerCera® ET2016C-R Sample**

Created by T.Mitsuhashi

Checked by T.Yoshida

Approved by T.Koizumi

**1. Scope**

This specification has been prepared to specify the major specification of the samples of the rechargeable lithium-ion cell ("Cell") to be supplied to the customer by NGK.

**2. Battery Classification and Model**

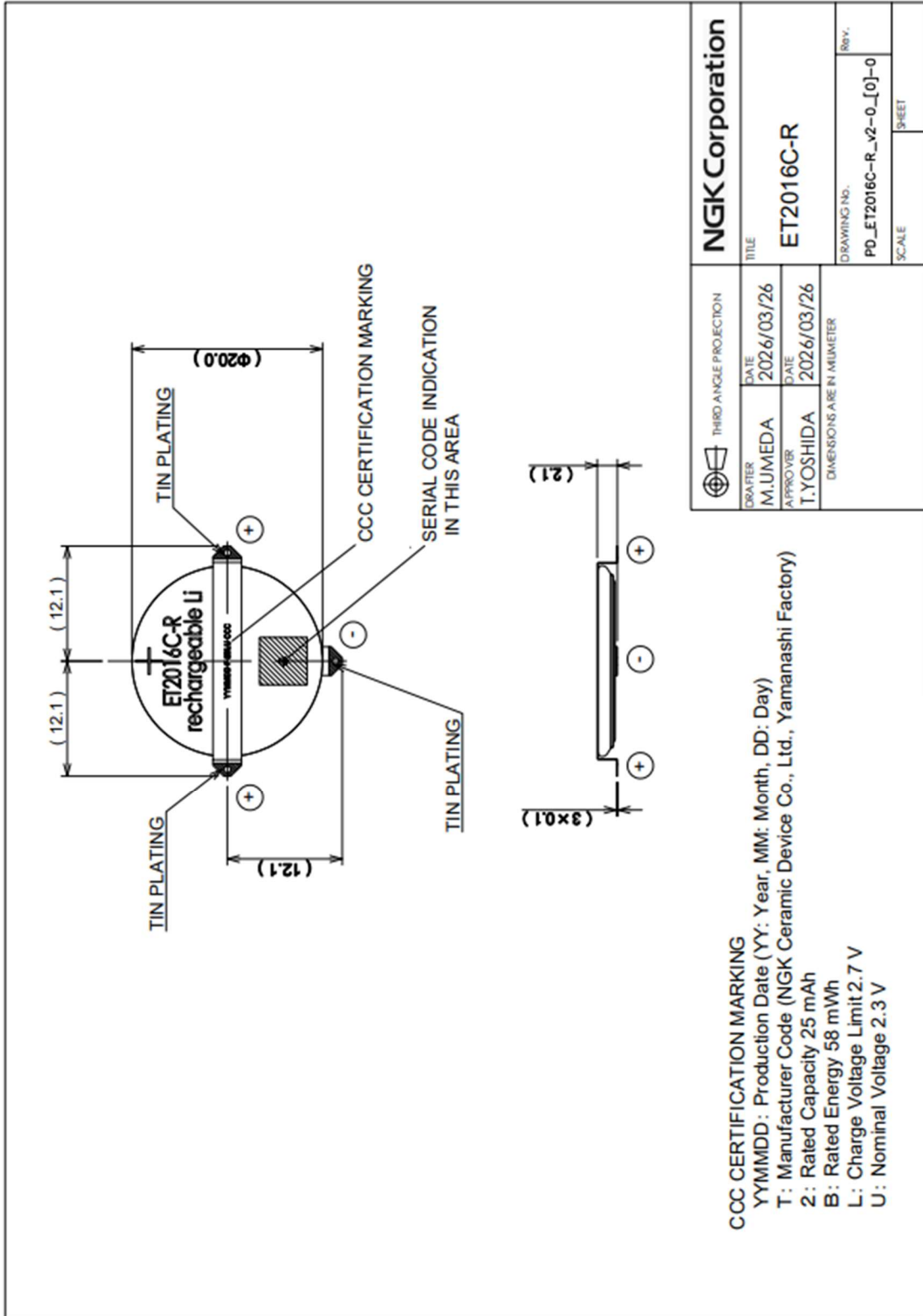
- 2.1 Battery Classification: Rechargeable lithium ion battery  
2.2 Battery Model Name: ET2016C-R

**3. Major Specifications**

All values are for references only.

Item	Value	
3.1	Operating Voltage	2.7~1.5V
3.2	Nominal Capacity (Standard Charge)	25.0mAh
3.3	Minimum Capacity (Standard Charge)	23.0mAh
3.4	Nominal Voltage	2.3V
3.5	1CmA	25mA
3.6	Standard Charge	CV (Constant Voltage) Voltage:2.7V Cut-off current : 0.02CmA (@25°C)
3.7	Max. Charge Current	No limit
3.8	Cell Weight	Less than 1g
3.9	Cell Dimension	Φ20.0mm(Not including terminals)
3.10	Cell thickness	Approx. 1.8mm(Not including terminals)

4.Drawings



(end of page)