

DATASHEET for EnerCera® ET1210C-H Sample

Created by T.Mitsuhashi

Checked by T.Yoshida

Approved by T.Koizumi

1. Scope

This specification has been prepared to specify the major specification of the samples of the rechargeable lithium-ion cell ("Cell") to be supplied to the customer by NGK.

2. Battery Classification and Model

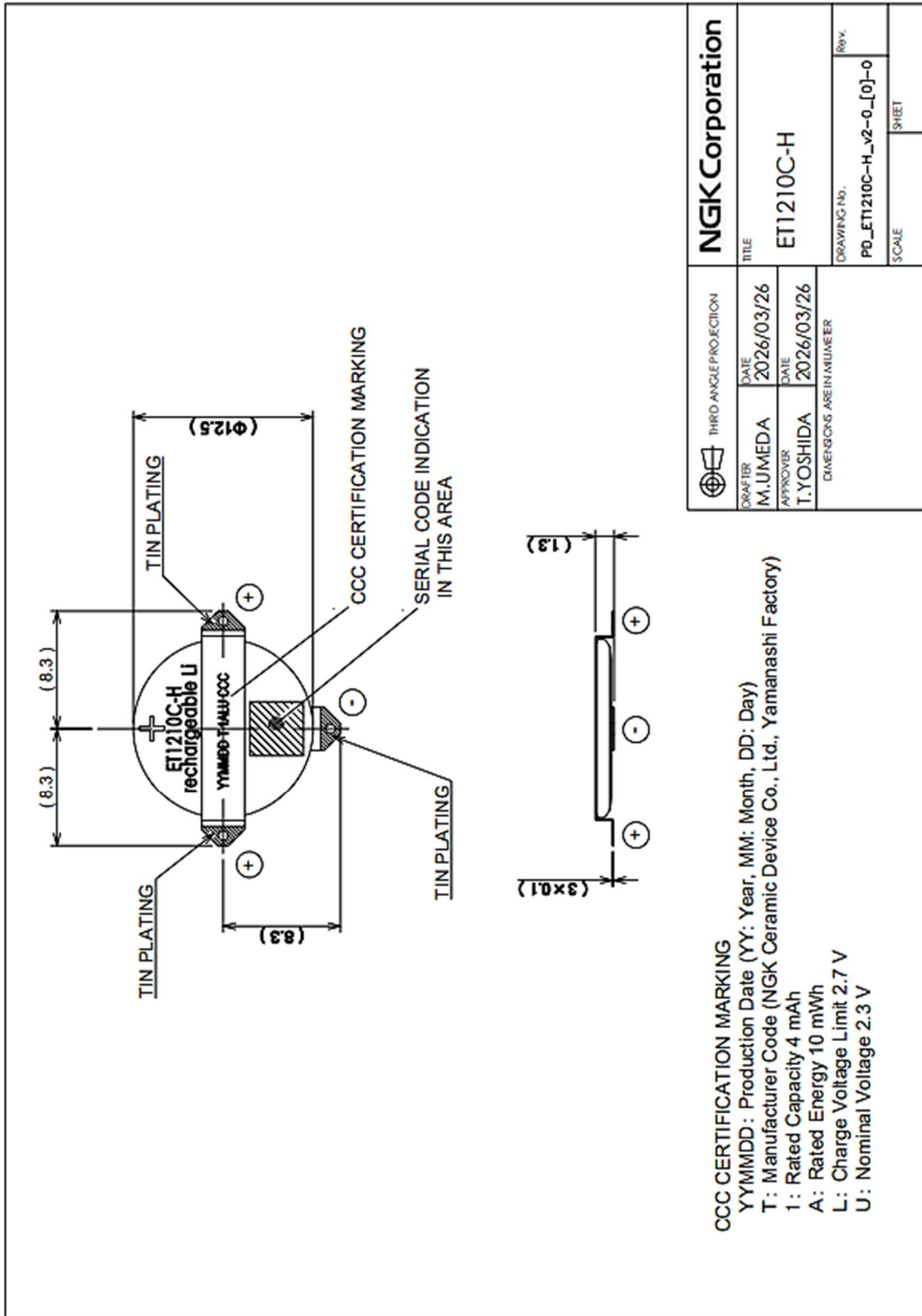
- 2.1 Battery Classification: Rechargeable lithium ion battery
- 2.2 Battery Model Name: ET1210C-H

3. Major Specifications

All values are for references only.

Item	Value	
3.1	Operating Voltage	2.7~1.5V
3.2	Nominal Capacity (Standard Charge)	4.0mAh
3.3	Minimum Capacity (Standard Charge)	3.5mAh
3.4	Nominal Voltage	2.3V
3.5	1CmA	4mA
3.6	Standard Charge	CV (Constant Voltage) Voltage:2.7V Cut-off current : 0.02CmA (@25°C)
3.7	Max. Charge Current	No limit
3.8	Cell Weight	Less than 1g
3.9	Cell Dimension	Φ 12.5mm(Not including terminals)
3.10	Cell thickness	Approx. 1.0mm(Not including terminals)

4.Drawings



NGK Corporation									
THIRD ANGLE PROJECTION	TITLE								
<table border="1"> <tr> <td>DRAFTER</td> <td>DATE</td> </tr> <tr> <td>M.UMEDA</td> <td>2026/03/26</td> </tr> <tr> <td>APPROVER</td> <td>DATE</td> </tr> <tr> <td>T.YOSHIDA</td> <td>2026/03/26</td> </tr> </table>	DRAFTER	DATE	M.UMEDA	2026/03/26	APPROVER	DATE	T.YOSHIDA	2026/03/26	ET1210C-H
DRAFTER	DATE								
M.UMEDA	2026/03/26								
APPROVER	DATE								
T.YOSHIDA	2026/03/26								
DRAWING NO.									
PO_ET1210C-H_v2-0 [0]-0									
SCALE	SHEET								
	REV.								

CCC CERTIFICATION MARKING
 YYMMDD : Production Date (YY: Year, MM: Month, DD: Day)
 T : Manufacturer Code (NGK Ceramic Device Co., Ltd., Yamanashi Factory)
 1 : Rated Capacity 4 mAh
 A : Rated Energy 10 mWh
 L : Charge Voltage Limit 2.7 V
 U : Nominal Voltage 2.3 V

(end of page)