

**DATASHEET for EnerCera® EC382704P-T Sample**

Created by T.Mitsuhashi

Checked by T.Yoshida

Approved by T.Koizumi

**1. Scope**

This specification has been prepared to specify the major specification of the samples of the rechargeable lithium-ion cell ('Cell') to be supplied to the customer by NGK.

**2. Battery Classification and Model**

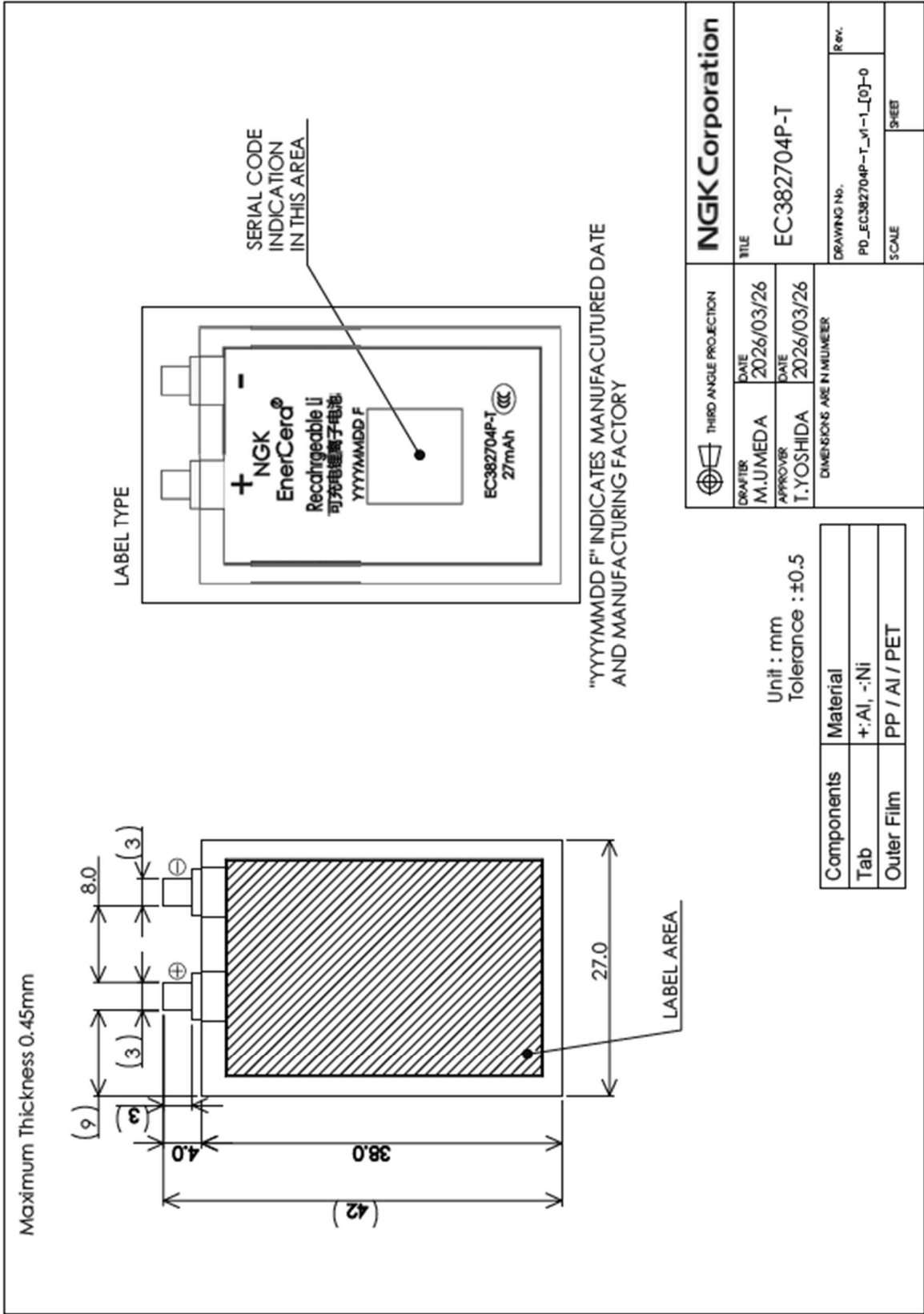
- 2.1 Battery Classification: Rechargeable lithium ion battery
- 2.2 Battery Model Name: EC382704P-T

**3. Major Specifications**

All values are for references only.

Item		Value	
3.1	Operating Voltage	4.2~3.0V	4.3~3.0V
3.2	Nominal Capacity (Standard Charge/Discharge)	24mAh	27mAh
3.3	Minimum Capacity (Standard Charge/Discharge)	22mAh	25mAh
3.4	Nominal Voltage	3.8V	3.8V
3.5	1CmA	24mA	27mA
3.6	Standard Charge	CC-CV (Constant Current & Constant Voltage) Current : 0.5CmA / Voltage:4.2V Cut-off current : 0.05CmA (@25±4°C,45±30%RH)	
3.7	Standard Discharge	CC(Constant Current) Current : 1CmA Cut-off Voltage : 3.0V (@25±4°C,45±30%RH)	
3.8	Cell Weight	Approx. 1.0g	
3.9	Cell Dimension	38mm×27mm×0.45mmt	

4.Drawings



(end of page)