

DATASHEET for EnerCera® EC382704P-Hr Sample

Created by T.Mitsubishi

Checked by T.Yoshida

Approved by T.Koizumi

1. Scope

This specification has been prepared to specify the major specification of the samples of the rechargeable lithium-ion cell ('Cell') to be supplied to the customer by NGK.

2. Battery Classification and Model

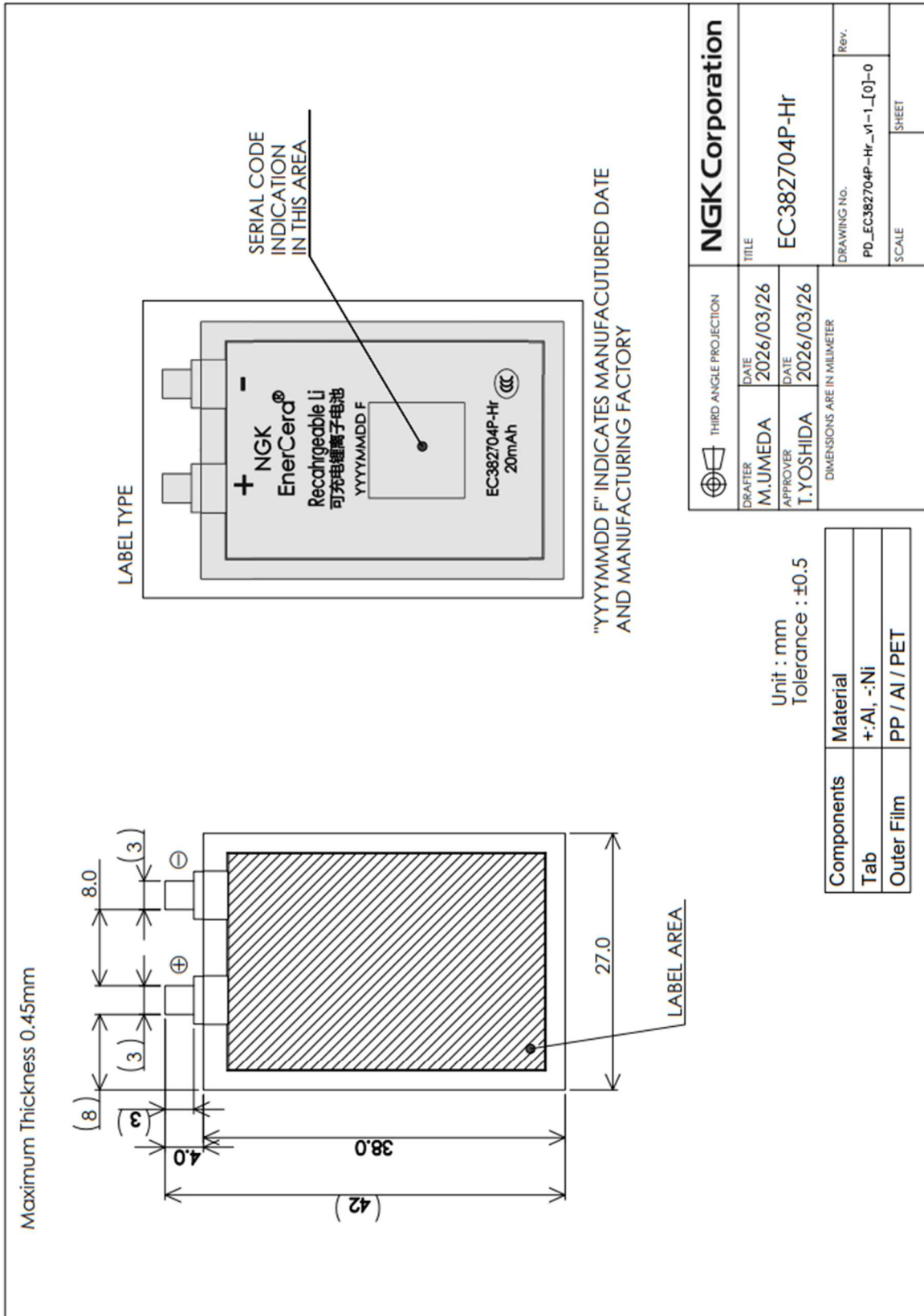
- 2.1 Battery Classification: Rechargeable lithium ion battery
- 2.2 Battery Model Name: EC382704P-Hr

3. Major Specifications

All values are for references only.

Item	Value
3.1	Operating Voltage 4.2 to 3.0V
3.2	Nominal Capacity (Standard Charge/Discharge) 20mAh
3.3	Minimum Capacity (Standard Charge/Discharge) 18mAh
3.4	Nominal Voltage 3.8V
3.5	1CmA 20mA
3.6	Standard Charge CC-CV (Constant Current & Constant Voltage) Current : 0.5CmA / Voltage:4.2V Cut-off current : 0.05CmA (@25°C)
3.7	Standard Discharge CC(Constant Current) Current : 0.5CmA Cut-off Voltage : 3.0V (@25°C)
3.8	Cell Weight Less than 1g
3.9	Cell Dimension 38mm × 27mm × 0.45mm

4. Drawings



NGK Corporation	
THIRD ANGLE PROJECTION	TITLE
DRAFTER M.UMEDA	DATE 2026/03/26
APPROVER T.YOSHIDA	DATE 2026/03/26
DIMENSIONS ARE IN MILLIMETER	
EC382704P-Hr	
DRAWING No.	Rev.
PD_EC382704P-Hr_v1-1_[0]-0	
SCALE	SHEET

(end of page)